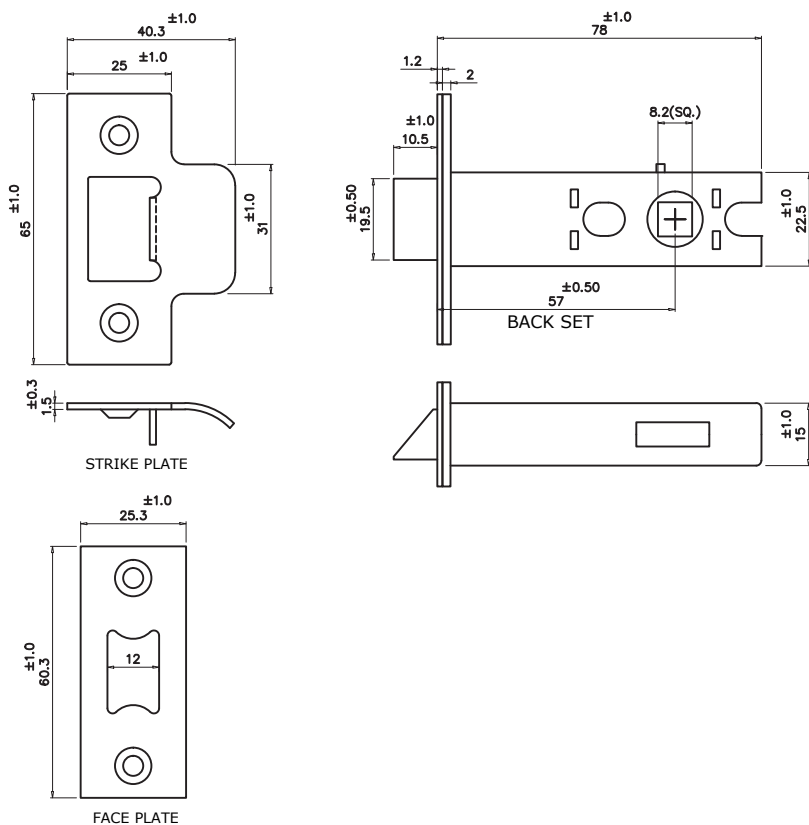


ARCHITECTURAL TUBULAR LATCH 3"

1 LATCH AND STRIKE DIMENSIONS



TUBULAR LATCHES

Heavy duty strongly sprung latch.

Used for internal doors that do not require locking from either side.

Suitable for unsprung levers, unsprung mortice knobs and with heavy lever handles requiring additional springing to return to rest.

Suitable for use with 8mm door handle spindles and for round rose furniture requiring bolt through fixing

Latch is fully reversible for door handing.

2½" recommended for Levers

3" recommended for Mortice Knobs

(Not recommended for sprung Mortice Knobs)

SIZES CODES & FINISHES

YKAL3N-AT	3"	Antique Finish
YKAL3N-BLK	3"	Black Finish
YKAL3N-MB	3"	Matt Bronze Finish
YKAL3N-PB	3"	Brass Finish
YKAL3N-PC&PN	3"	Pol.Chrome/Nickel Finish
YKAL3N-SB	3"	Satin Brass Finish
YKAL3N-SN&SC	3"	Satin Chrome/Nickel Finish

2 4x screws

Box Contains

1 Tubular Latch and Strike plate(s)

2 4x screws

M Marcus Ltd., Dudley

Material

Description

Sizes shown are in mm and approximate unless otherwise indicated. We reserve the right to amend where necessary and without any prior notice.

Metals

Standard Duty Tubular Latch