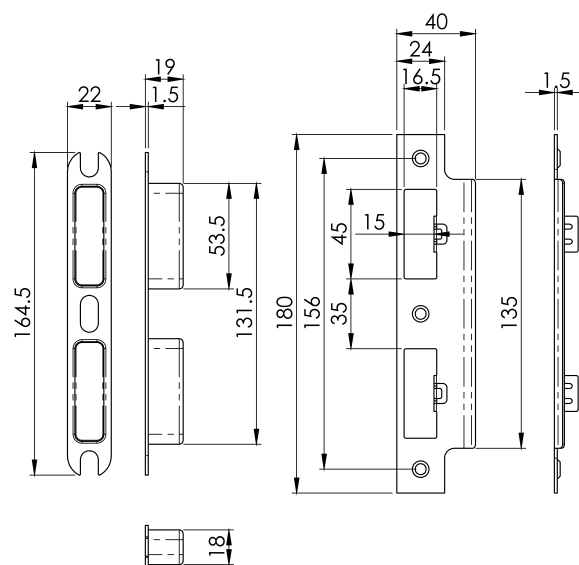
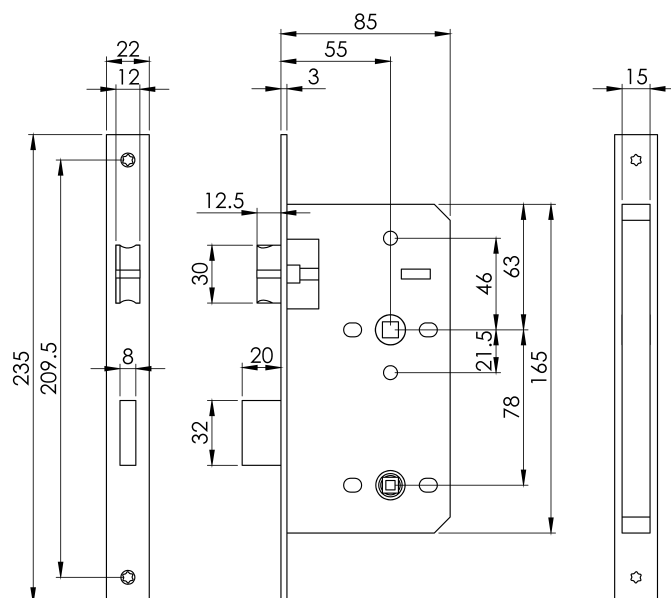
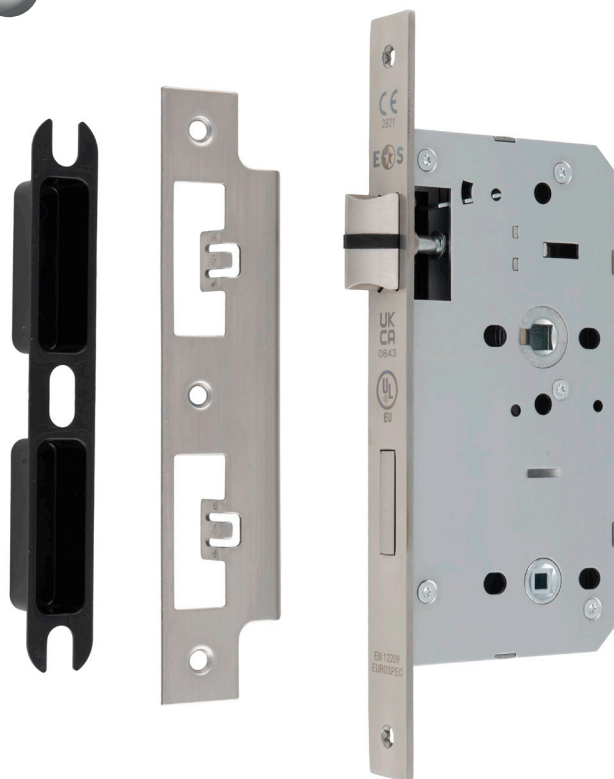


55mm DIN Bathroom Lock - 78mm c/c - 5mm Follower - Square

DLX7855WC

SSS



- EN12209 Grade X - highest durability and side load possible
- Slimline 22mm forend, available in square or radius
- Sculpted design with silent ABS insert
- Grade 304 stainless steel Latch & Deadbolt material
- 20mm single throw deadbolt
- Fire rated up to FD120 timber and up to FD240 steel
- Available in SSS finish from stock
- CE & UKCA marked
- Third party accredited using the UL-EU safety mark
- Intumescent Kit - ES1277



SCAN ME

 **CARLISLE BRASS**

Part of ASSA ABLOY

+44 1228 511030

Carlisle Brass Ltd, Parkhouse Road, Carlisle, CA3 0JU

enquiries@carlislebrass.com

www.carlislebrass.com





CE MARKING Certification required by the “Construction Products Regulation (CPR) 2011” for products being sold in EU. The CE mark on a product indicates that the product has been successfully 3rd party conformity assessment by an EU27 Notified Body. It is the manufacturer’s declaration that the product complies with all essential requirements relating to the relevant European Harmonised Standard for that product type. Since January 2022, CE marking has not been recognised in Great Britain (England, Scotland, & Wales), but products carrying CE can still be sold if they also carry UKCA marking. Northern Ireland (whilst the Northern Ireland Protocol remains) will still align with EU rules for CE marking. (Any product being placed on the market there from Great Britain must carry CE mark, along with UKCA mark (or UKNI mark)).



UKCA MARKING (UK Conformity Assessed) certification required by the “Construction Products (Amendment etc.) (EU Exit) Regulations 2020” for products being placed on the market in Great Britain (England, Scotland and Wales). It applies to most goods which previously required CE marking, and many of the testing and accreditation requirements are similar, however for UKCA, the product complies with all essential requirements relating to the relevant UK Designated Standard for that product type.



10 Year
Mechanical Guarantee



FD30/60/120 TIMBER
30/60/120 minute fire doors



FD240 STEEL
120/240 minute fire doors



UL EU The UL-EU Mark is a voluntary pan-European certification mark from UL Solutions, applicable to components that comply with existing EN standards. It is designed for products in the European market and ensures compliance with EN safety standards, addressing the growing demand for safer products. By displaying the UL-EU Mark, manufacturers demonstrate their commitment to safety and benefit from UL Solutions trusted reputation for public safety. The UL-EU certificate allows eligible products to showcase this mark, giving consumers confidence that the products have been tested and certified to UL’s high-quality standards. For more information, visit ul.com.



BS EN 12209 UK designated version of the harmonised European standard, requirements and testing methods covering single axis hinges, locks, latches and locking plates.

EN 12209:2003/AC2005										
2812 - CPR - 0320										
3	X	8	1	0	G	-	B	G	2	0



UL-EU-01344-EN