


SLIDING DOOR KIT FITTING INSTRUCTIONS

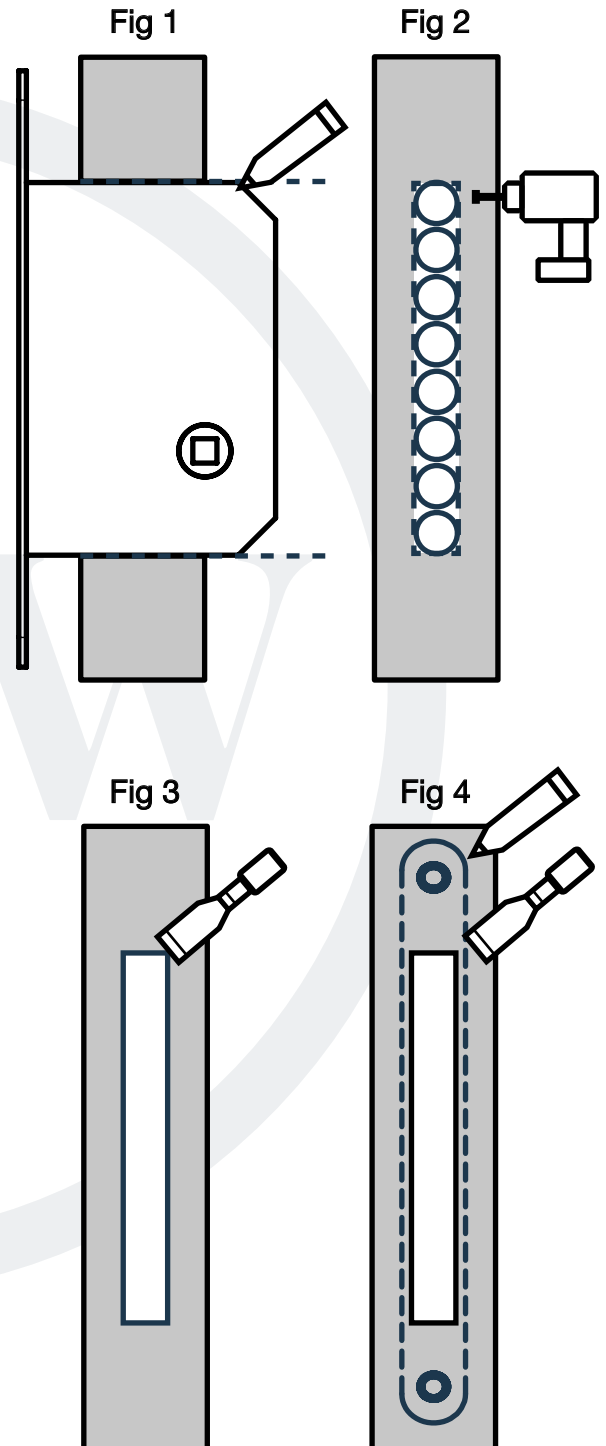
 Incorrectly installing this product will negatively impact function and lifespan. If you are unsure please contact a professional. Drawings not to scale unless otherwise specified.

Important note - Any mortice must always be aligned horizontally and vertically in order for all components to operate correctly.

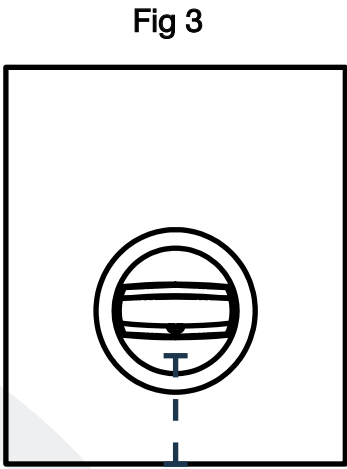
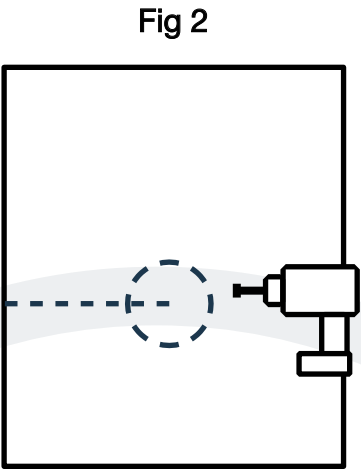
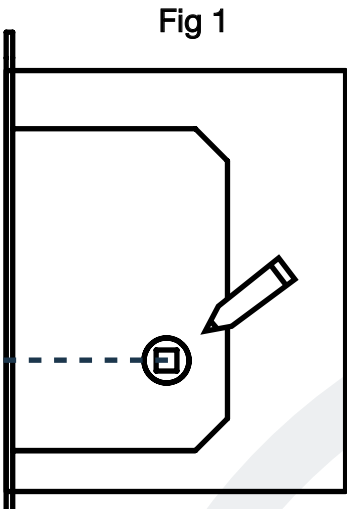
Suited only for sliding doors 35mm - 50mm in thickness.

Lock Body Installation:

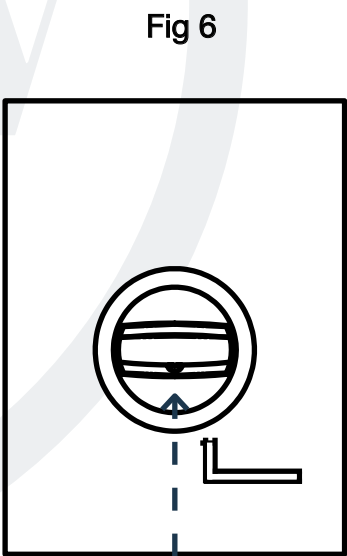
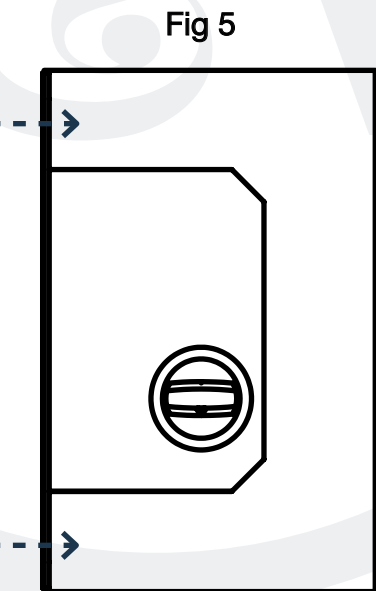
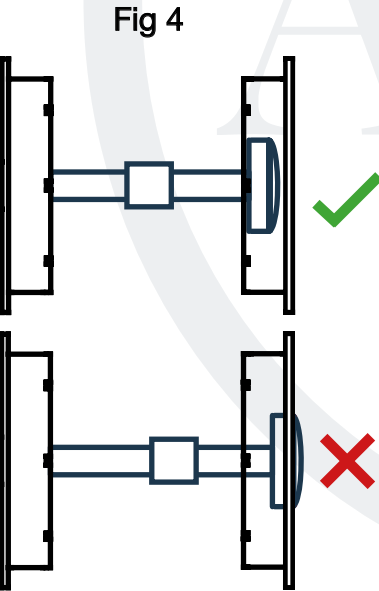
1. Determine the position of the Lock against the Door Edge. Mark the top and bottom of the Lock. This will serve as a guide for Morticing the Lock Body. (Fig 1).
2. Between the lines for top and bottom of the Lock, mark a vertical guideline central to the Door edge, to use as a guide for a series of holes to be drilled to the required depth. (Fig 2).
3. Chisel out the remaining wood to provide satisfactory clearance for the Lock Body. The mortice should be smooth and any shavings or swarf must be removed. (Fig 3).
4. Insert the Lock Body into the morticed hole and mark around the Faceplate (Fig 4). Remove the Lock from Door and chisel out a recess to accept the depth of Forend. Ensure any swarf is removed from mortice.
5. With the mortice prepared for the Lock body, the next steps will outline the Turn and Release Installation. Do not install the Lock as it will be used as reference for the Turn and Release Position.



Turn and Release Installation:



1. Place the Lock and Fixed Plate flush against the side of the Door and mark the position of the Follower (Fig 1). This will be the centre of the mortice that will accommodate the Turn and Release.
2. Using a Mortise Bit slightly smaller than the roses, mortice a hole on either side of the Door face at the marked position of the Follower (Fig 2). Taking care that both sides are aligned. Use a chisel to remove any swarf. Taking care not to enlarge the mortice.
3. Gently insert the Turn (Interior) and Release (Exterior) Rose into the mortice of their corresponding face. If greater force is needed, protect the surface and use rubber mallet to tap into place. Align Grubscrew hole to bottom of door (Fig 3).



4. Insert the Spindle Set (Including washer) through the Release Rose and into the Turn. If the spindle projects from the Release Rose when fully inserted into the turn. Cut to length so that it is flush with the release rose, and inserted into the turn (Fig 4).
5. Remove the Spindle and Insert the Lock Body into the Mortice of the door. Mark the position of the fixing screw locations and Pilot Drill the Fixing Holes. Hand tighten the fixing screws (Fig 5).
6. With the Lock Installed, reinsert the Spindle Set as Step 4. Thread the Spindle cover onto the Spindle so that it sits within the Follower when in situ. Insert the Grub Screw into the Thumbturn, and Tighten Grubscrew onto Spindle (Fig 6). Check operation.

Keep and Finger Pull Installation:

Note - The Finger Pull Component is friction fit, and with the correct size mortice - no adhesive or fixings are required.

Finger Pull Installation:

1. Chose a location either above or below the installed Lock Body for the Finger Pull. Mark a center to mortice (Fig 1).
2. Using a Mortise Bit equal to, or slightly smaller than the diameter of the Cup (Fig 2), drill a hole in the Door deep enough to accommodate the Finger Pull. Use a chisel to remove any swarf. Taking care not to enlarge the mortice.
3. Gently insert the Finger Pull into the morticed hole. If greater force is needed, protect the surface and use a rubber mallet to tap into place (Fig 3).

Keep Installation:

1. Bring the Door to the edge of the Frame. Take the Keep and align it to be centered with the Lock Body Bolt (Fig 3). Mark the position against the Door Frame by drawing around the Keep Body and Aperture.
2. Remove the Keep from Door and mortice out a recess so that the Aperture accepts the depth of the thrown Bolt. Taking care not to remove material wider than the Keep Body.
3. Using the Markings (Fig 3), chisel out a recess to accept the Keep's Body and depth as to be flush to the frame. Ensure any swarf is removed from mortice (Fig 4)
4. Insert the Keep Body into the mortice and mark position of fixings. Remove, and pilot drill fixing holes. Return Keep Body to mortice and hand tighten fixing screws (Fig 5).

Check full installation is correct within the doorset before operation.

